

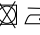


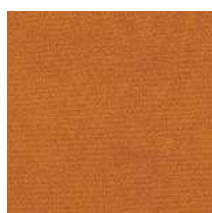


Categoria A

■ Brunei

Composizione	Larghezza	Resistenza all'abrasione	Formazione di lanugine	Proprietà ignifughe	Rispetto per l'ambiente	Pulizia
100% poliestere	140 cm	30.000 MD	4	BS 5852 parte 1	Oeko-Tex	    



18



29



31



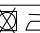




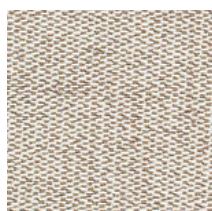
38



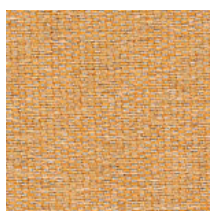
45

■ Fargo

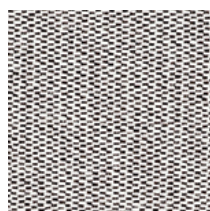
Composizione	Larghezza	Resistenza all'abrasione	Formazione di lanugine	Proprietà ignifughe	Rispetto per l'ambiente	Pulizia
100% poliestere	142 cm	62.000 MD	4-5	EN 1021 parte 1	—	    



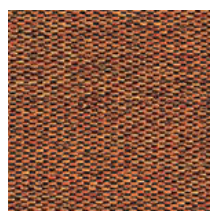
701



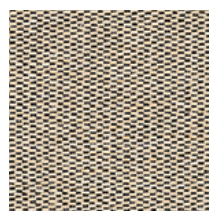
710



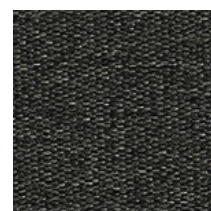
801



923



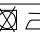
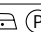



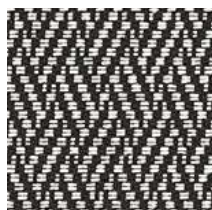
927



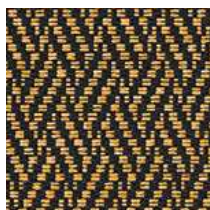
990

■ Harby

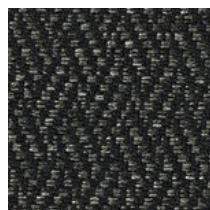
Composizione	Larghezza	Resistenza all'abrasione	Formazione di lanugine	Proprietà ignifughe	Rispetto per l'ambiente	Pulizia
100% poliestere	142 cm	62.000 MD	4-5	EN 1021 parte 1	—	    



801




810



990

Categoria A

■ Jim

Composizione	Larghezza	Resistenza all'abrasione	Formazione di lanugine	Proprietà ignifughe	Rispetto per l'ambiente	Pulizia
56% cotone, 20% poliestere, 12% viscosa, 12% lino	142 cm	54.000 MD	4	EN 1021 parte 1	—	



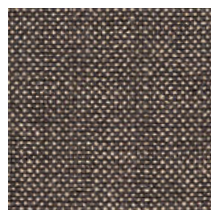
598



604



718



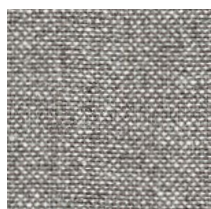
767



803



826




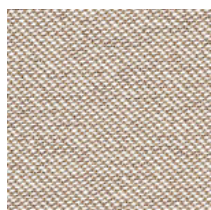
828



898

■ Lerma

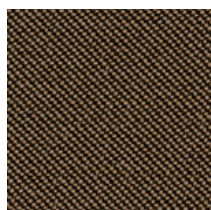
Composizione	Larghezza	Resistenza all'abrasione	Formazione di lanugine	Proprietà ignifughe	Rispetto per l'ambiente	Pulizia
100% poliestere	142 cm	112.000 MD	4-5	EN 1021 parte 1	—	



701



801



818



847




882



909

■ Luciana

Composizione	Larghezza	Resistenza all'abrasione	Formazione di lanugine	Proprietà ignifughe	Rispetto per l'ambiente	Pulizia
57% cotone, 43% poliestere	142 cm	40.000 MD	4	EN 1021 parte 1	—	



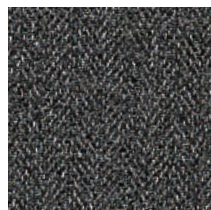
750



801



838



881

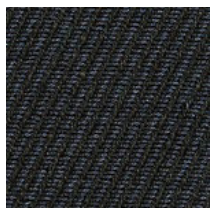
Categoria A

Manresa

Composizione	Larghezza	Resistenza all'abrasione	Formazione di lanugine	Proprietà ignifughe	Rispetto per l'ambiente	Pulizia
52% cotone, 26% poliestere, 11% viscosa, 11% lino	142 cm	55.000 MD	4	EN 1021 parte 1	—	(P)



108



905



907

Robo

Composizione	Larghezza	Resistenza all'abrasione	Formazione di lanugine	Proprietà ignifughe	Rispetto per l'ambiente	Pulizia
33% cotone, 37% poliestere, 21% viscosa, 9% lino	142 cm	48.000 MD	4	EN 1021 parte 1	—	(P)



562



566



703



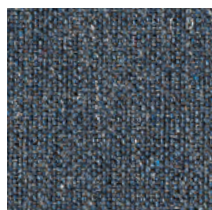
708



820




857



885

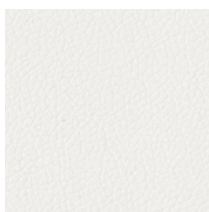
Categoria A

■ Grain

Composizione	Larghezza	Resistenza all'abrasione	Formazione di lanugine	Proprietà ignifughe	Rispetto per l'ambiente	Pulizia
superficie 100% poliuretano; lato incollatura 67% poliestere, 33% cotone	140 cm	200.000 MD	—	BS 5852 parte 1 California TB117-2013 EN 1021 parte 1 & 2	REACH	



arcilla 75



blanco 00



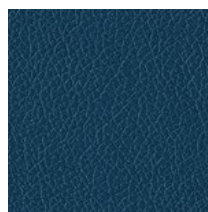
canela 11



crema 02



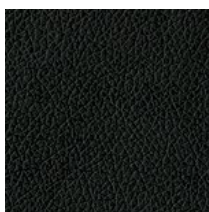
gris 01



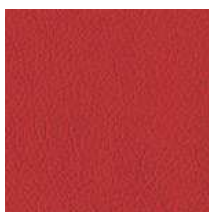
marino 69



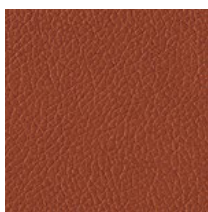
marron 23



negro 90



rojo 29



teja 15



tierra 07