

ZEBRA POP 4 gambe / 4-legs

Design Luisa Battaglia



Scocca imbottita con anima in policarbonato.
Struttura a 4 gambe in acciaio tubolare ø mm 16 cromato,
verniciato o in finitura ottone satinato.
Impilabile grazie ad un carter sottoscocca. Per uso interno.

*Upholstered main body with polycarbonate core.
4-leg frame in 16 mm diam tubular chrome, coated or with
satin brass finish steel tube.
Stackable thanks to an underseat shell. For indoor use.*

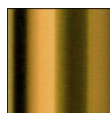
FINITURA STRUTTURA FRAME FINISHING



cromato
chromed



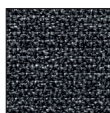
VA
verniciato
antracite
anthracite grey
coated



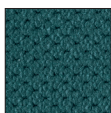
OS
ottone
satinato
satin
brass

TESSUTI E COLORI FABRICS AND COLOURS

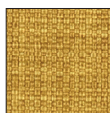
TESSUTO / FABRIC



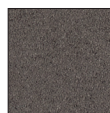
T3 25
grigio classico
classic grey



M2 09
verde pavone
peacock green



T5 27
zafferano
saffron



M1 05
visone
mink brown



T4 53
verde acido
lime green

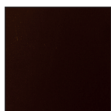


T4 55
nero
black

CUOIO / LEATHER



CN 81
rosso
red



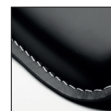
CN 82
moka
moka



CN 83
bianco
white



CN 84
nero
black



cuoio
leather
CN 84

SIMILPELLE / SIMIL-LEATHER



EP 72
rosso
red



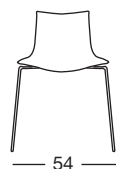
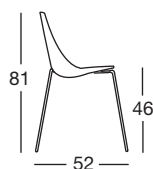
EP 73
moka
moka



EP 74
bianco
white



EP 75
nero
black



Struttura a 4 gambe
4-leg frame

Art. 2640

Imballo Packing	2 pezzi 2 pieces
Peso unitario Unit weight	Kg 6,400
Misure imballo Packing sizes	65,5x57,5x99,5 cm

CATAS

Conforme EN 15373:2007
Compliant with EN 15373:2007

made in Italy

SCAB DESIGN
since 1957

Sede/Headquarters: 25030 Coccaglio (BS) Italy - Via G. Monauni, 12
Divisione Commerciale Italia: Tel. 0307718.755 - italia@scab.it
Export Department: Phone +390307718.715 - export@scabitaly.com
www.scabdesign.it