

2016

MATERIALS

FABRIC - LEATHER - ROPE - WOOD

> CATEGORY 1 / PLANET

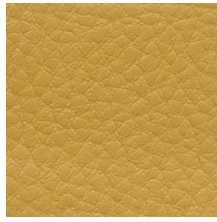
87,5% PVC - 12,5% COTTON



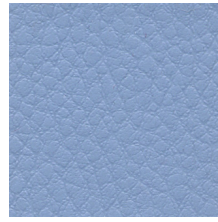
6
BIANCO
WHITE



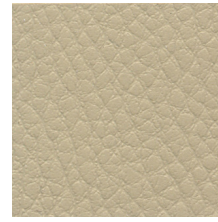
991
NERO
BLACK



71
OCRA
OCHRE



4979
DENIM CHIARO
LIGHT DENIM



1110
SABBIA
SAND



726
BORDEAUX
BORDEAUX



1817
SMERALDO
EMERALD



1304
MOGANO
MAHOGANY



1984
GRIGIO
GREY



1305
TESTA DI MORO
BROWN



4947
BLU DI PRUSSIA
PRUSSIAN BLUE



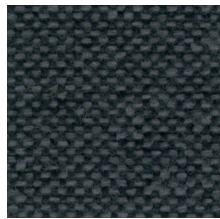
680
ROSSO
RED

> CATEGORY 2 / JET

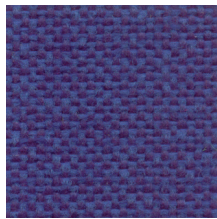
100% POLYESTER TREVIRA CS



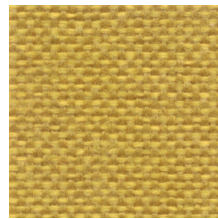
0001
BIANCO
WHITE



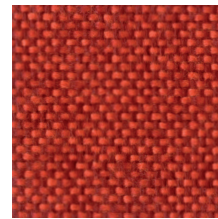
9806
NERO
BLACK



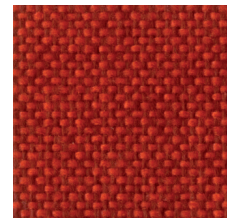
9602
BLU
BLUE



9304
GIALLO
YELLOW



9402
ARANCIONE
ORANGE



9401
ROSSO
RED

> CATEGORY 2 / XTREME

100% RECYCLED POLYESTER FIBRE FLAME RETARDANT



YS009
HAVANA



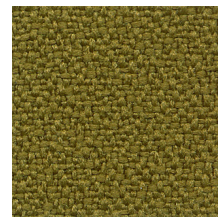
YS004
MARTINIQUE



YS108
ARUBA



YS158
NICOBAR



YS077
APPLIEDORE



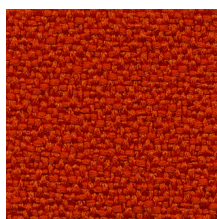
YS046
SOMBRERO



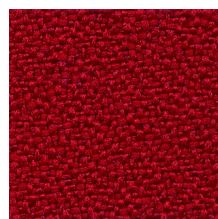
YS047
WINDJAMMER



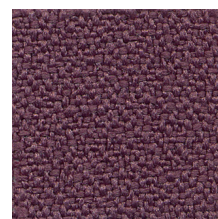
YS165
ADOBO



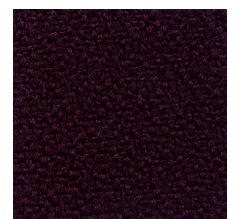
YS168
TORTUGA



YS079
PANAMA



YS102
BRIDGETOWN



YS030
TOBAGO

> *CATEGORY 2 / AUREA MOOD*

72% PVC - 3% PU - 25% COTTON



1
BIANCO
WHITE



10
ROSSO
RED



26
NERO
BLACK



2
PANNA
CREAM



28
GRIGIO
GREY



27
TERRA DI SIENA
BROWN



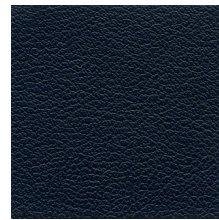
18
LAVANDA
LAVENDER



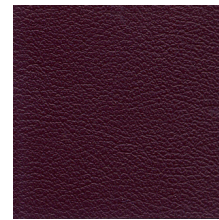
9
ARANCIO
ORANGE



13
LIME CHIARO
LIGHT LIME



25
BLU DI PRUSSIA
PRUSSIAN BLUE



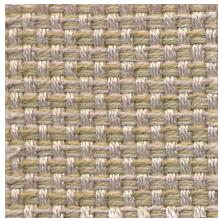
11
MELANZANA
AUBERGINE



3
TORTORA
DOVE-COLOUR

> *CATEGORY 2 / MICHELANGELO*

100% ACRYLIC FIBRE



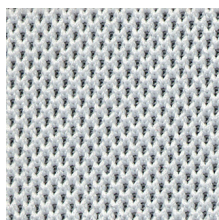
50964/13
SABBIA
SANDY



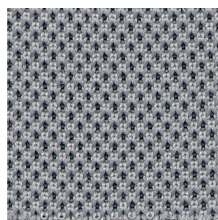
50964/18
GRIGIO
GREY

> *CATEGORY 3 / NEXUS*

100% POLYESTER



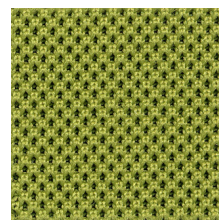
UNY12
CHALK



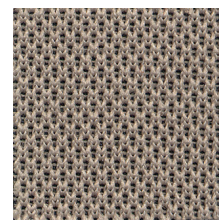
UNY07
STORM



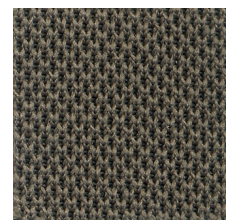
UNY01
PEWTER



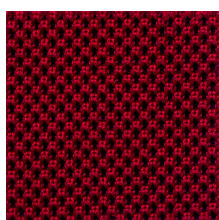
UNY05
KIWI



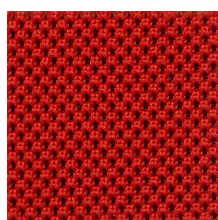
UNY02
LIMESTONE



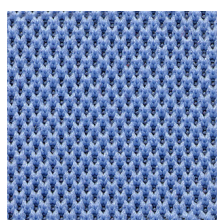
UNY09
OLIVE



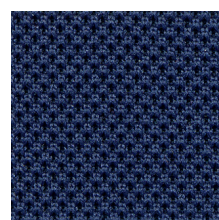
UNY16
RUSSIAN



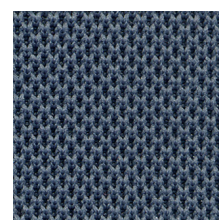
UNY04
BERRY



UNY06
SKY



UNY03
PACIFIC



UNY08
DENIM



UNY13
BLACK



CUZ47
FAIRFIELD



CUZ31
TREVELYAN



CUZ88
STARLEY



CUZ82
WESLEY



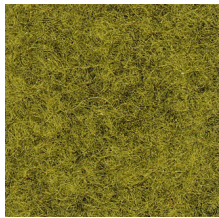
CUZ90
EDGE HILL



CUZ18
ORIEL



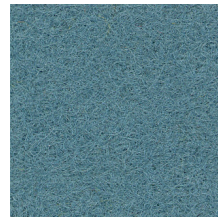
CUZ1C
LANCASTER



CUZ1F
ULSTER



CUZ1L
NEWPORT



CUZ02
ASTON



CUZ08
NAPIER



CUZ62
GLENALMOND



CUZ30
SILCOATES



CUZ1S
NOTTINGHAM



CUZ1X
ST MARTINS

PELLE | LEATHER

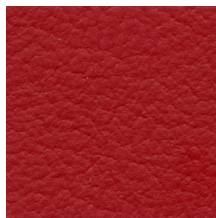
CORRECTED GRAIN PRINTED



U001
NERO
BLACK



U002
BIANCO
WHITE



U003
ROSSO
RED



U004
MARRONE
BROWN

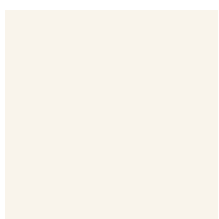


U006
MARRONE CHIARO
TAN

PELLE RIGENERATA | REGENERATED LEATHER



RG1
COGNAC
COGNAC



RG2
BIANCO
WHITE



RG3
NERO
BLACK



RG4
TORTORA
DOVE-COLOUR



T1
FAGGIO NATURALE
NATURAL BEECH



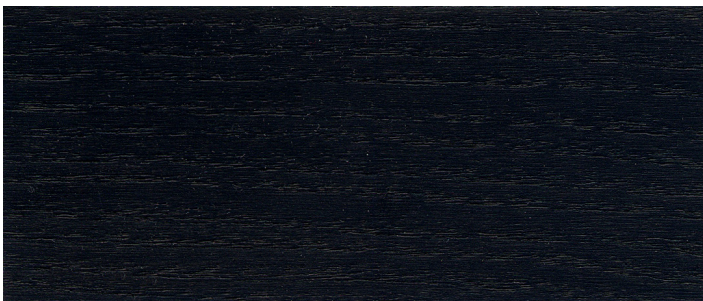
T2
FRASSINO TINTA ROVERE
ASH OAK-STAINED



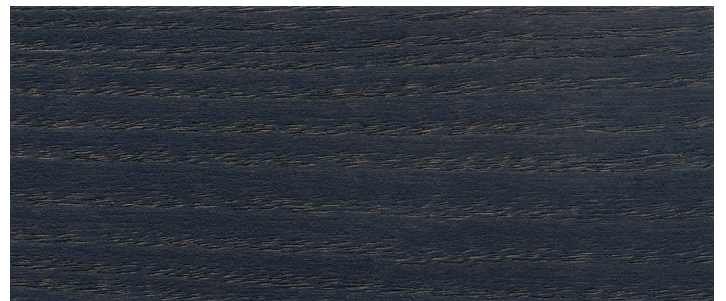
T3
FRASSINO NATURALE
NATURAL ASH



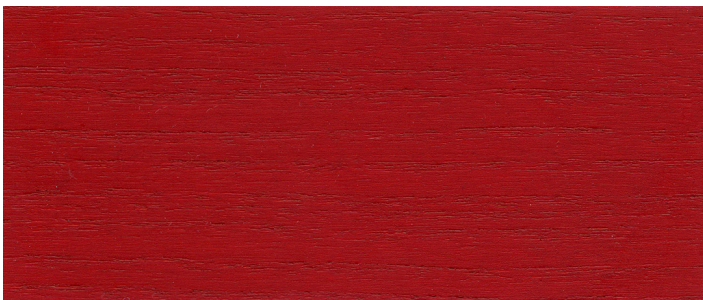
T4
FRASSINO ANILINA BIANCO
WHITE ANILINE ASH



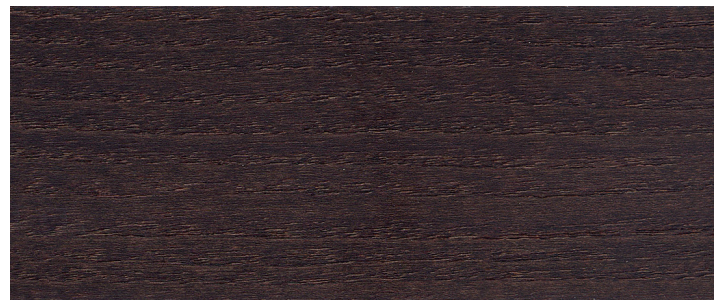
T5
FRASSINO ANILINA NERO
BLACK ANILINE ASH



T6
FRASSINO ANILINA GRIGIO
GREY ANILINE ASH

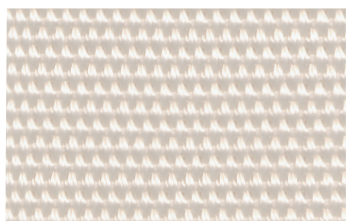


T7
FRASSINO ANILINA ROSSO
RED ANILINE ASH

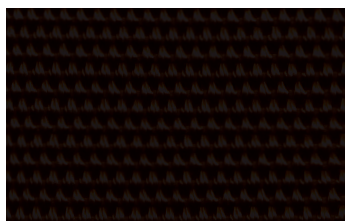


T8
FRASSINO ANILINA WENGÉ
WENGE ANILINE ASH

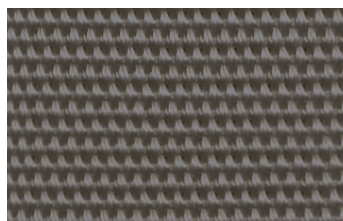
CINGHIA POLIESTERE | POLYESTER BELT



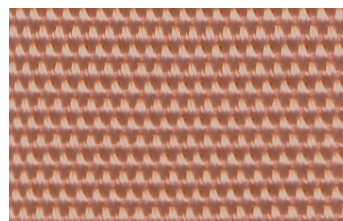
BLT1
BIANCO
WHITE



BLT2
NERO
BLACK



BLT3
GRIGIO
GREY



BLT4
SALMONE
SALMON

CORDA PVC | PVC ROPE

STR1
TRASPARENTE / TRANSPARENT

STR2
BIANCO / WHITE

STR3
NERO / BLACK

STR4
MARRONE / BROWN

STR5
ROSSO / RED

STR6
VERDE / GREEN

STR7
CELESTE / LIGHT BLUE



SEZIONE CORDA



Ø 4 mm



CORDA POLIESTERE | POLYESTER ROPE

R01
BIANCO / WHITE

R02
NERO / BLACK

R03
GRIGIO SILVER / SILVER GREY

R04
MARRONE / BROWN

R05
CANAPA / HEMP

R06
BEIGE / BEIGE

R07
VERDE MILITARE / MILITARY GREEN



TONDA | ROUND



Ø 8 mm



PIATTA | FLAT



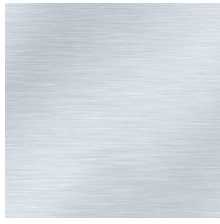
H 8 mm
H 10 mm



> METALLO / METAL



CRO
CROMATO
CHROMED



ALU
ALLUMINIO
ALUMINIUM



INX
INOX SPAZZOLATO
BRUSHED STEEL

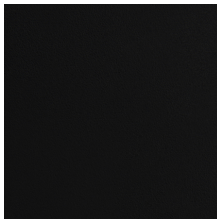
> ACCIAIO VERNICIATO GOFFRATO / PAINTED EMBOSSED METAL



AL1
ALLUMINIO GOFFRATO
EMBOSSED ALUMINIUM



M1
BIANCO TRAFFICO
TRAFFIC WHITE



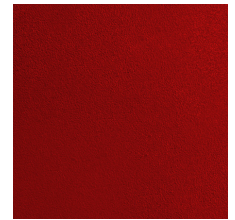
M2
NERO
BLACK



M3
MARRONE SEPPIA
SEPIA BROWN



M4
GRIGIO BASALTO
BASALT GREY

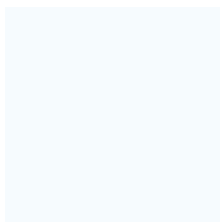


M5
ROSSO RUBINO
RUBY RED

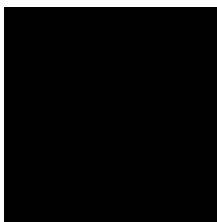
> ACCIAIO VERNICIATO / PAINTED STEEL



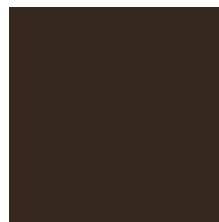
AL2
ALLUMINIO SATINATO
SATINATED ALUMINIUM



M6
BIANCO TRAFFICO
TRAFFIC WHITE



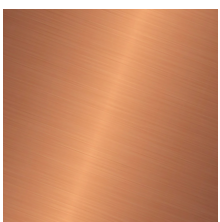
M7
NERO
BLACK



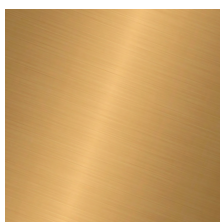
M8
MARRONE GRIGIASTRO
GREY BROWN



M10
ROSSO FUOCO
FLAME RED



CU
RAME
COPPER

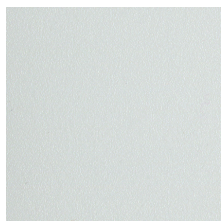


OT
OTTONE
BRASS

> *POLIPROPILENE* / **POLYPROPYLENE**



PP1
BIANCO
WHITE



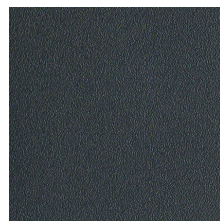
PP2
GRIGIO PERLA
PEARL GREY



PP3
NERO
BLACK



PP4
MARRONE
BROWN



PP5
ANTRACITE
ANTHRACITE



PP6
ROSSO
RED



PP7
ARANCIO
ORANGE



PP8
VERDE CHIARO
LIGHT GREEN



PP9
BLU
BLUE



PP10
NEUTRO
NEUTRAL



PP11
TORTORA
DOVE



PP12
GRAFITE
GRAPHITE



PP13
OLIVA
OLIVE



PP14
LAMPONE
RASPBERRY

> *NYLON LUCIDO* / **SHINY NYLON**



PC1
NERO
BLACK



PC2
BIANCO
WHITE



PC3
TRASPARENTE
TRANSPARENT



PC4
FUMÉ
SMOKED GREY

> *POLICARBONATO* / **POLYCARBONATE**

> *POLYPLUS® / POLYPLUS®*



PU1
GRIGIO CHIARO
CLEAR GREY



PU2
TAUPE
TAUPE



PU3
GRIGIO LONDRA
LONDON GREY



PU4
VERDE FORESTA
FOREST GREEN



PU5
BLU PETROLIO
PETROLEUM BLUE



PU6
MARRONE CIOCCOLATO
CHOCOLATE BROWN

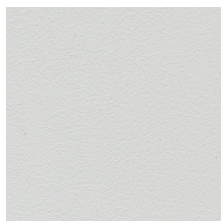


PU7
ROSSO PORPORA
PURPLE RED

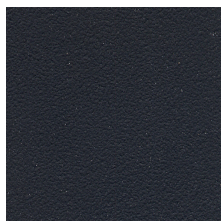


PU8
GIALLO GINESTRA
BROOM YELLOW

> *POLYTECH® / POLYTECH®*



PT1
GRIGIO CHIARO
LIGHT GREY



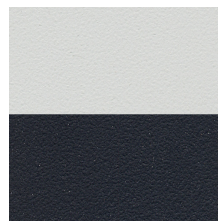
PT2
NERO
BLACK



PT3
ROSSO
RED



PT4
ROSSO-GRIGIO CHIARO
RED-LIGHT GREY

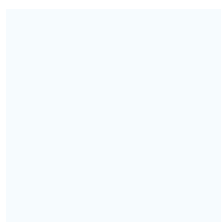


PT5
NERO-GRIGIO CHIARO
BLACK-LIGHT GREY

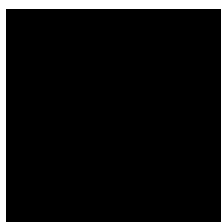


PT6
VERDE-GRIGIO CHIARO
GREEN-LIGHT GREY

> *HPL / HPL*



HPL1
FULLCOLOR BIANCO
WHITE



HPL2
FULLCOLOR NERO
BLACK



HPL3
BIANCO
WHITE

> CATEGORY 1 PLANET

EN 1021-1/93, UNI 9175 CLASSE 1 IM, BS 5852-1, CLASSEMENT M2, CALIFORNIA TB 117-2013, MARTINDALE (200.000 CYCLES) ISO 5470-2

Manutenzione e Lavaggio / Maintenance and Cleaning

Spolverare delicatamente e strofinare leggermente con panno umido. Macchie ostinate: disciogliere tempestivamente la macchia con alcool etilico diluito in acqua al 20%, tamponare e trattare successivamente con un detergente neutro, risciacquare bene.

Dust gently, clean surfaces using microfiber damp cloth. Harder stains: dissolve the stain quickly by using ethylic alcohol diluted in water at 20%, tampon, clean with neutral detergent and rinse again.

> CATEGORY 2 JET

C1 (UNI 9174 - UNI 8456), M1 (NF P 92501-7), B1 (DIN 4102), EN 1021-1 CIGARETTE, EN 1021-2 MATCH, CRIB 5 (BS 5852 PART II), IMO RES. A652 (16), AM 18 (NF D 60013), BS 7176 MEDIUM HAZARD, MARTINDALE (65.000 CYCLES) UNI EN ISO 12947-2

Manutenzione e Lavaggio / Maintenance and Cleaning

Regolarmente con aspirapolvere, strofinare leggermente con panno umido.

Vacuum regularly, wipe clean with a damp cloth.

> CATEGORY 2 XTREME

EN 1021 PART 1 AND 2, UNI 8456, UNI 9174 CLASS 1, BS 7176:2007 LOW HAZARD & MEDIUM HAZARD, BS 5852 CRIB 5, CLASSEMENT M1, DIN 4102 B1, MARTINDALE (100.000 CYCLES) BS 2543:1995/2004

Manutenzione e Lavaggio / Maintenance and Cleaning

Pulire regolarmente con aspirapolvere, strofinare leggermente con panno umido.

Vacuum regularly, wipe clean with a damp cloth.

> CATEGORY 2 AUREA MOOD

EN 1021 PART 2, UNI 9175 CLASSE 1 IM, BS 5852-1, BS 5852 CRIB 5, CALIFORNIA TB 117-2013, IMO A.652(16), MARTINDALE (50.000 CYCLES) ISO 5470-2:2003

Manutenzione e Lavaggio / Maintenance and Cleaning

Spolverare delicatamente e strofinare leggermente con panno umido. Macchie ostinate: disciogliere tempestivamente la macchia con alcool etilico diluito in acqua al 20%, tamponare e trattare successivamente con un detergente neutro, risciacquare bene.

Dust gently, clean surfaces using microfiber damp cloth. Harder stains: dissolve the stain quickly by using ethylic alcohol diluted in water at 20%, tampon, clean with neutral detergent and rinse again.

> CATEGORY 2 MICHELANGELO

UNI EN ISO 105 B04, MARTINDALE (12.000 CYCLES) UNI EN ISO 12947-2

Manutenzione e Lavaggio / Maintenance and Cleaning

Antimacchia, idro-oliorepellente con trattamento Teflon Extreme. Pulire regolarmente con aspirapolvere, strofinare leggermente con panno umido.

Soil-resistant, oil and water-repellent with Teflon Extreme finishing. Vacuum regularly, wipe clean with a damp cloth.

> CATEGORY 3 NEXUS

EN 1021 PART 1 AND 2, UNI 9175 CLASSE 1 IM, BS 7176:2007 LOW HAZARD, BS 476 PART 7 CLASS 1, MARTINDALE (100.000 CYCLES) BS 2543:1995/2004

Manutenzione e Lavaggio / Maintenance and Cleaning

Pulire regolarmente con aspirapolvere, strofinare leggermente con panno umido.

Vacuum regularly, wipe clean with a damp cloth.

> CATEGORY 4 BLAZER

EN 1021 PART 1 AND 2, UNI 9175 CLASSE 1 IM, BS 7176:2007 LOW HAZARD, CLASSEMENT M2, MARTINDALE (50.000 CYCLES) BS 2543:1995/2004

Manutenzione e Lavaggio / Maintenance and Cleaning

Pulire regolarmente con aspirapolvere, strofinare leggermente con panno umido.

Vacuum regularly, wipe clean with a damp cloth.

**REGENERATED
LEATHER**

BS 5852-1

Manutenzione e Lavaggio / Maintenance and Cleaning

Regolarmente con aspirapolvere, strofinare leggermente con panno umido.
Vacuum regularly, wipe clean with a damp cloth.

LEATHER

IUF 450 500 CICLI (A SECCO)

Manutenzione e Lavaggio / Maintenance and Cleaning

Pulire esclusivamente con detergente neutro ed acqua.
Clean only with water and a neutral soap.

ARRMET SRL

Via Alessandro Volta, 8
33044 Manzano (UD) - ITALY
Phone +39 0432 937065
Fax +39 0432 740102
mail@arrmet.it
www.areadeclic.com
www.debi.it
P.I. / C.F. : IT00452180300